



**EnerPower, Inc.**

**Tel. 386-339-1842 eFax.239-790-5127 Cel. 239-825-5645**  
**enerpower18@gmail.com, pablo@enerpower-inc.com**  
**9624 137<sup>th</sup> Court Live Oak, FL 32060**  
**www.enerpower-inc.com**

**Serving industries around the world since 2002**

**www.enerpower-inc.com**

**Your Source for Quality Products for Your Electrical & Mechanical Machinery**

## AC DRIVES & STARTERS



### VACON 100 FLOW DRIVE



**Dedicated functionality for pumps, fans and compressors**  
VACON® 100 FLOW is an AC drive that is dedicated to improving flow control and saving energy in industrial pump and fan applications.

### VLT® Automation Drive FC 301 / FC 302



### VLT® Micro Drive FC 51

### VLT® Midi Drive FC 280



## A compact and cost-effective soft starter

An extremely cost-effective and compact soft starter that provides basic soft start and stop functionality and easy DIN rail mounting.

### VLT® Soft Start Controller MCD 100



### VLT® Compact Starter MCD 201 and MCD 202



### VLT® Soft Starter MCD 500





Dry Type transformers



Commercial Transformers





Compact Certified Encoder for UL Class 1 Div 2 Hazardous Environments



Field Proven Encoders



EtherNet/IP

EtherCAT





Soft Starters



Electromechanical Contactors and Starters



Manual Motor Starters



Enclosed Manual Motor Starters with HOA & On Light



Monitoring Relays



Motor Protection Relays



Motor Protection Circuit Breakers



Manual Motor Protection



Combination Motor Starters



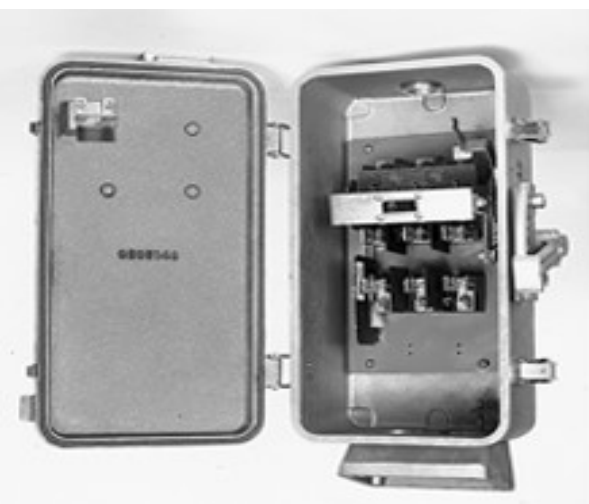
EATON VFD H-Max Series



EatonFlashGard Arc-Resistant MCC



Definite Purpose Contactors and Starters



# ELECTRIC MOTORS

ABB BALDOR



HYUNDAI



LEESON/LINCOLN



TATUNG



MARATHON ELECTRIC



WORLD WIDE ELCTRIC



VERTICAL AND T FRAME MOTORS



## ESL Power Systems, Inc.

### Manual Transfer Switch - StormSwitch™



**Manual Transfer Switch**  
**1000A – 3000A • Pad Mount**  
ESL's UL/cUL 1008 Listed pad-mounted StormSwitches range from 1000A - 3000A and include a main padlockable door with separate lower hinged panel for emergency generator cable access. These higher amperage units include a fixed deadfront over 3-pole circuit breakers, hinged deadfront for emergency power cable hookup, ventilation louvers, and removable lifting pads. Left side wireway is standard for bottom feed up to 2000A. Dual side wireway available on units 2400A - 3000A.



### 3-way Manual Transfer Switch - TripleSwitch™



**Dual purpose 3-way manual transfer switch system designed to service facilities that utilize an automatic transfer switch and a permanent generator...provides ease of connection for Load Bank Testing and also Portable Generator Backup.**

**125-400A up to 600VAC TripleSwitch  
3-way Manual Transfer Switch**



Multilin 845 Transformer Protection System



Multilin 850 Feeder Protection System



Multilin 869 Motor Protection Relay



Multilin 889 Generator Protection Relay



# GE Multilin advanced metering

## Power Quality and Cost Management

PQM II



EPM 7100



EPM 4600



## Basic Power Monitoring

EPM 6100



EPM 2200



## Power Quality Analysis

EPM 9650



EPM 9800



EPM 9900P





## GE ITI: Instrument transformers

Application: ammeters, wattmeters, energy management systems, instrumentation, cross current compensation.

Typically installed in low voltage switchboards, panelboards, & MCC's.

Encapsulated in polyurethane  
JVA-0C for indoor & outdoor applications

Fused & unfused models

Designed to meet IEEE C57.13

Primary & secondary terminal covers

Typically used by electrical utilities for metering and instrumentation applications

Meet requirements of IEEE C57.13.

Some models IC approved; Multi-ratio models available.

Application: Metering and/or protection; Typically installed in low & medium voltage switchgear, MCC's, & LV switchboards & panelboards

# MARATHON GENERATORS

**MAGNAPLUS**



The advertisement features a composite image. On the left, a night-time photograph of a city skyline with illuminated skyscrapers and a waterfront. On the right, a white industrial generator unit is shown. The background of the right side is a blue gradient with the MAGNAPLUS logo. Text on the right side specifies the generator's capacity: kW: 5 to 430 (60 Hertz) and kVA: 5 to 420 (50 Hertz). A copyright notice is at the bottom right.

**MAGNAPLUS**

**kW: 5 to 430  
(60 Hertz)**

**kVA: 5 to 420  
(50 Hertz)**

©2007 Regal Beloit Corporation



**Morris Products.  
LED Lighting**





## SIGNALING TECHNOLOGIES



VISUAL SIGNALS, AUDIBLE ALARMS, COMBINED SIGNALING, SIGNAL TOWER/ STALK LIGHTS

## LIQUID COOLING



We offer a versatile range of chillers to choose from, ranging in sizes from less than 1/2 ton to 30 tons.



## Uninterruptible Power Supply (UPS) **Single Phase UPS: On-Line Double Conversion**



**Staco V**

**FirstLine PE**  
50-200 kVA / kW  
Energy Efficient Uninterruptible Power Supply  
Three Phase, On-Line Double Conversion  
In the event of an AC power failure, the FirstLine® PE UPS will automatically transfer to battery power and continue to provide power without any interruption for the full amount of time you select. When power returns, the FirstLine®PE UPS will automatically recharge the batteries for the next unexpected power outage or disturbance



**FIRSTLINE® PE**

**Steel Enclosures**

**Stainless Steel Enclosures**



*Your Enclosure Source®*



**Non Metallic Enclosures**

**Thermal Management**





#### The new ATS ATyS controllers

Add force, speed and power to your transfer switch with this new complete line of controllers.



**Multi-function meters**



Socomec's modular and scalable UPS solutions are the most innovative in terms of concept and functionality.



**Power factor correction system from 17,5 to 900 kvar**





**American Supplier of Precision Roller Chains, Industrial & Agricultural Chains, Sprockets, and Buckets**



Precision Roller Chain



Agricultural Chains



Engineering Class Chains & Buckets



Environmental Products



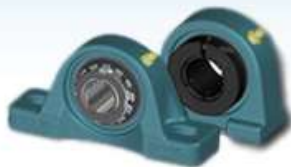
Sprockets



Mounted Bearing Units  
Mounted bearing Inserts  
Corrosion protection Bearing Units  
Corrosion Protection Bearing Inserts  
Air Movement Bearing Units  
Free Spinning Bearing Inserts  
Hi Temperature Bearing Insert and Units  
Shur-Seal Series Bearing Units



### Specialty Products



Air Movement  
Bearing Units



Free Spinning  
Bearing Inserts



High Temperature Bearing  
Inserts and Units



Shur-Seal Series  
Bearing Units



## Specialty Products



Air Movement  
Bearing Units



Free Spinning  
Bearing Inserts



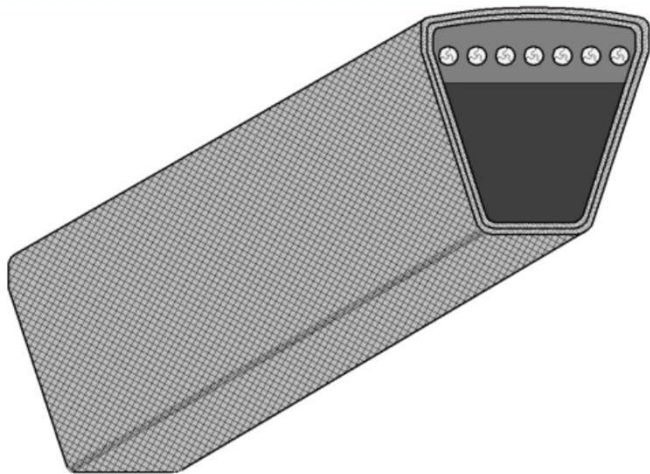
High Temperature Bearing  
Inserts and Units



Shur-Seal Series  
Bearing Units

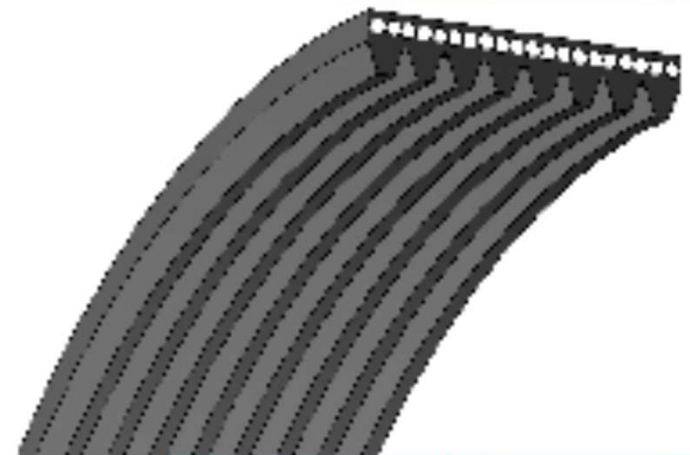


**BESTORQ®**



**V-BELTS, 3L, SPZ, A or 4L, SPA, B or 5L, SPB, C, SPC, D,  
3V, 5V, 8V.  
CLASSICAL WEDGE**

***Molded Rib” V-Ribbed belts***





# Bonfiglioli

Gearmotors and Gearboxes



Slew and Winch drives



Electric motors



Precision Planetary Gearboxes



Wind solutions



Inverters and Energy recovery





# GROVE GEAR

## Worm Gear Reducers

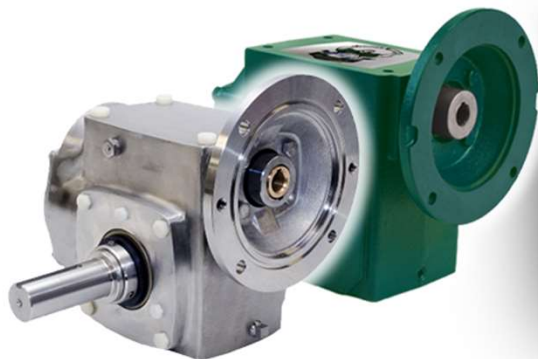


The Most Comprehensive Line  
of Worm Gear Reducers

## Bravo



Compact & Lightweight  
Power Transmission Solution



## E Series High Efficiency Right Angle Reducers

More Power, Less Inventory  
& Higher Efficiency

## High Efficiency Gear Reducers



Maximize System Efficiency  
& Reduce Energy Consumption



## WORLD WIDE ELECTRIC REDUCERS



Original Shaft Mount Reducer



Ultimate Shaft Mount Reducer

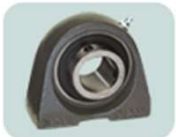


Accessories

# ***IPTCI*** **B E A R I N G S**



**Pillow Block**



**Tapped Base**



**4 Bolt Flange**



**2 Bolt Flange**



**Bearing Inserts**



**4 Bolt Piloted Flange**



**Take Up Unit**



**3 Bolt Flange**



**Hanger Unit**



**3 Bolt Flange Bracket**



**KML Stand-Out™ Bearing Housings**



***They are outstanding!***

# KML Bearing USA



**KML Poly-Guard IP69 Sealing System**



***The System is the Solution!***







**MOLINE  
BEARING CO.**



Type E Tapered Roller Bearings  
M2000 Spherical Roller Bearings



2 Bolt Pillow Block



4 Bolt Pillow Block



4 Bolt Flange



Piloted Flange



Wide Slot Take-up





**REXNORD ATLAS GEAR DRIVES**



**Omega Couplings**



**LINK-BELT FCB22400 FLANGED CARTRIDGE BLOCK** **REX CLASSIC B+ TRAINING IDLERS**  
**SPHERICAL ROLLER BEARINGS**



**Sugar Chain**



**Sprocket for Conveyor Chain**



**Chain and Sprockets for water Systems**



**Roller Chain**



**Conveyor Chain**

