

Multilin 845

Comprehensive Protection & Management for Power & Distribution Transformers

The Multilin™ 845 Transformer Protection System is a member of the Multilin 8 Series protective relay platform and has been designed for the protection, control and management of 2- and 3-winding power and distribution transformers in both utility and industrial applications.

The Multilin 845 provides advanced functionality for a wide range of transformer applications delivering high-speed protection, customizable programmable logic, advanced transformer monitoring and diagnostics, and support for the latest communications protocols for easy integration into new or existing power systems.

Advanced communications of the 8 Series platform allows easy integration into process and electrical control systems for smoother asset monitoring and control.

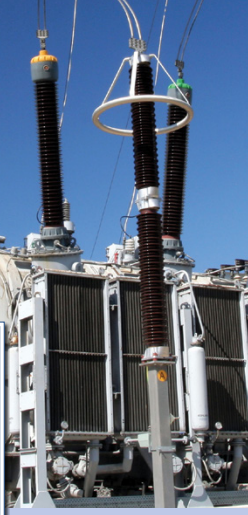
The Multilin 845 delivers comprehensive transformer health monitoring, diagnostics, and reporting with integrated connectivity to composite and multiple gas transformer DGA solutions such as, GE's Kelman Transformer Monitoring devices, delivering actionable analytics for asset optimization and transformer life extension.

Key Benefits

- Comprehensive transformer protection for small, medium and large transformers
- Advanced transformer diagnostics and disturbance recording extending asset life
- Integrated protection and DGA device operation for advanced warning of potential issues before they become critical transformer faults or failures
- High-end cyber security tools such as AAA, Radius, RBAC, and Syslog helps enable NERC® CIP requirements
- Draw-out design simplifies testing, commissioning and maintenance, thereby increasing process uptime
- Optional Wi-Fi connectivity minimizes system configuration and facilitates safe relay programming and diagnostic retrieval
- Monitored environmental conditions helps reduce system downtime
- High flexibility for customized protection and control logic

Applications

- Primary and back-up protection and management of small, medium and larger power and distribution transformers, autotransformers and reactors
- Designed for Utility (Transmission & Distribution) or Industrial applications
- Integrated transformer protection, monitoring diagnostics and transformer health visualization



Innovative Technology & Design

- Advanced transformer protection, control and diagnostics capability
- Fault gas collection, trending, and analysis integrated within protection relay
- Patented environmental monitoring and diagnostics
- Advanced, flexible and embedded communications: IEC® 61850 Ed2, IEC 62439/PRP, Modbus® RTU & TCP/IP, DNP3.0, IEC 60870-5-104
- Single setup and configuration across the platform
- Elimination of electrolytic capacitors
- Field swappable power supply
- Enhanced relay draw-out construction

Exceptional Quality & Reliability

- IPC A-610-E Class 3 manufacturing standards
- Highest reliability standards for electronics testing
- 100% Environmental Stress Screening and full functional testing
- Rated for IP54 (front) applications
- Standard Harsh Environment Conformal Coating

Uncompromising Service & Support

- Covered under GE's 10 year warranty plan
- Designed, tested and manufactured by GE



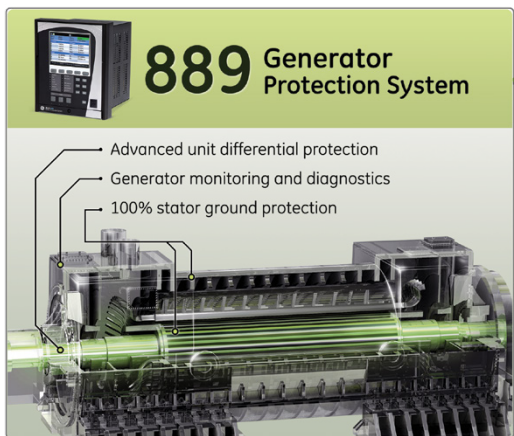
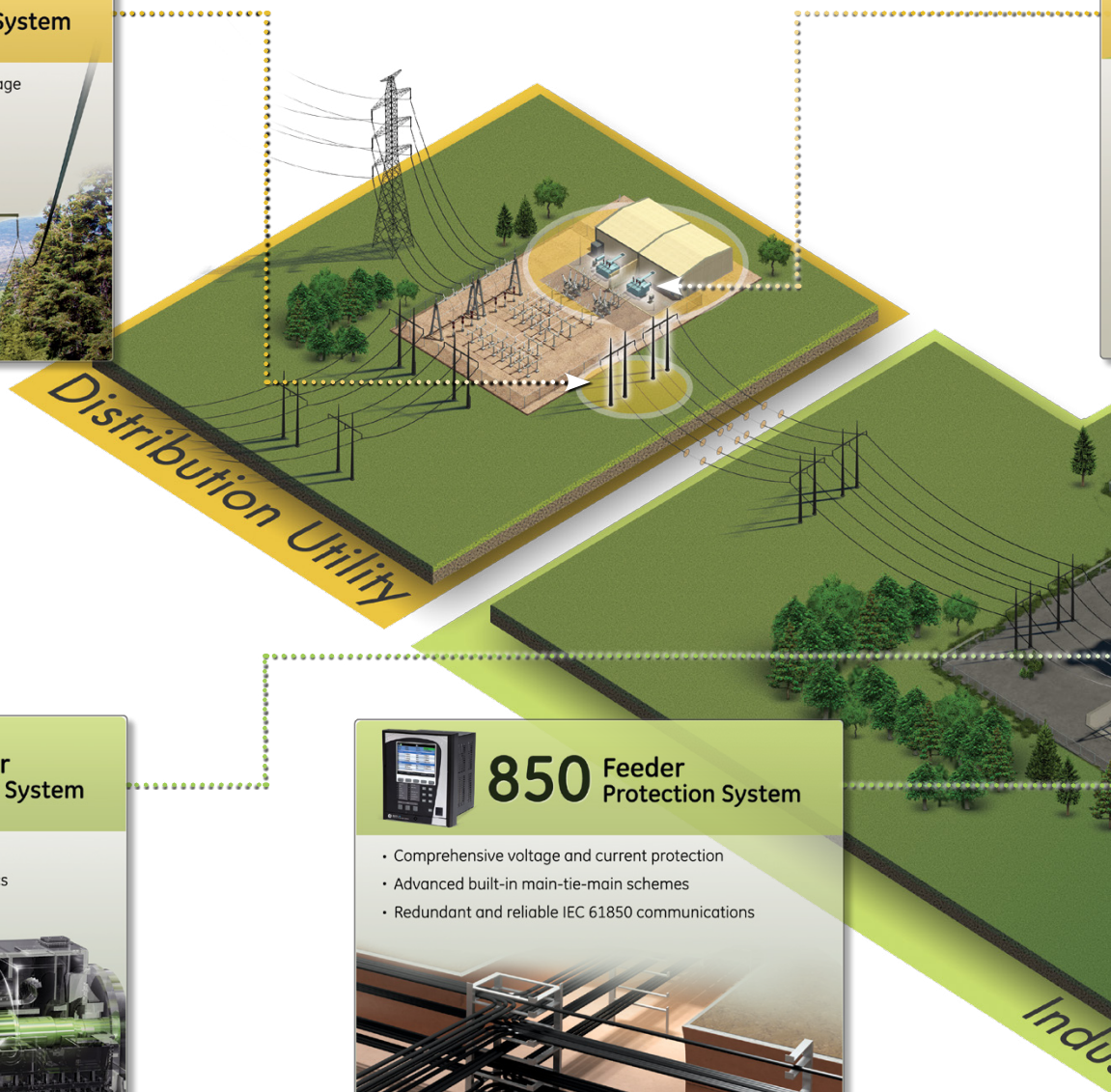
Multilin 8 Series Platform Overview

From oil pumping and refining facilities, to open pit or underground mining and processing operations, to large or small utilities, customers demand solutions that ensure maximum process uptime, minimum operational and maintenance efforts, and have the durability to withstand harsh environmental conditions.

The Multilin 8 Series is GE's next-generation protection and control relay platform provides comprehensive protection and asset monitoring for critical feeders, motors, generators, and transformers.

The 8 Series is designed to solve the challenges that customers face in running their day-to-day operations including maximizing system and process uptime, simplifying system integration and maintenance, and extending the life of critical assets. Utilizing advanced design practices, superior technology (elimination of all electrolytic capacitors), and state-of-the-art test and manufacturing facilities, GE is raising the bar on system performance and reliability.

With advanced communications the 8 Series integrates easily and seamlessly into new or existing DCS/SCADA system, along with other Multilin protection devices, providing a comprehensive solution for the end-to-end electrical system within the operations.



Exceptional Quality & Reliability

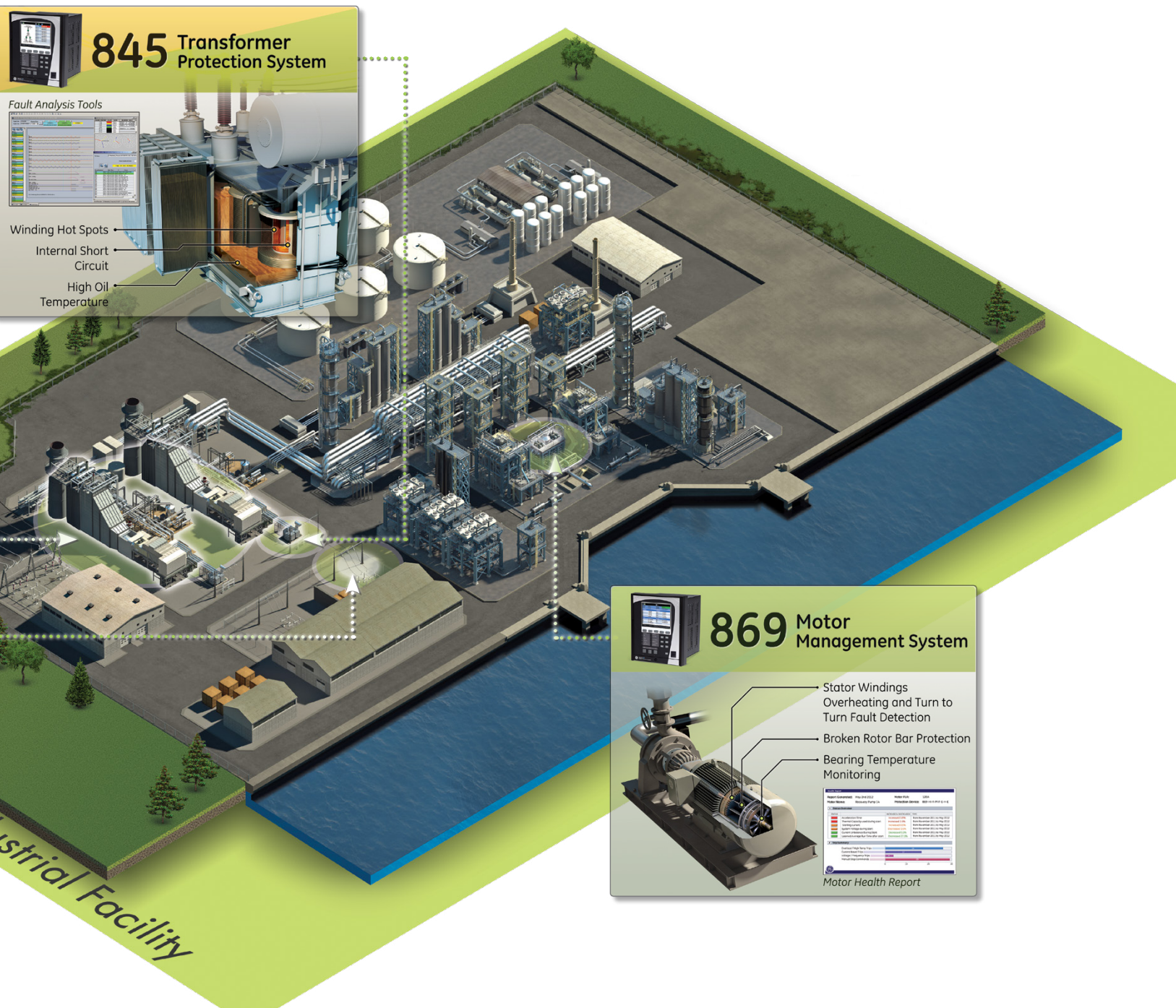
Industry-leading quality, reliability and design processes are at the core of GE's next generation protective relay platform. With significant investments in state-of-the-art type test facilities that simulate a complete range of operating environments and manufactured to the IPC A-610 Class 3 standard, adhering to the highest reliability standards and ensuring rugged performance, each device completes Environmental Stress Screening prior to shipping from GE's facility.

The Multilin 8 Series Protection Relays are manufactured in an ISO® 9001:2008 certified manufacturing facility.

Pioneering Technology & Design

The Multilin 845 is part of the 8 Series platform that provides comprehensive, high performance protection and control for critical assets in Industrial and utility environments.

Utilizing decades of experience in transformer protection, GE has implemented ease-of-use features, such as single screen setup and condition-based health monitoring and diagnostics, including integrated transformer fault gas collection, trending, and analytics.



The Multilin 8 Series products have an integrated protection integrity engine that utilizes customized algorithms, providing advanced diagnostics to ensure asset protection is not compromised.

Maintaining and safeguarding the electrical supply of an operation is critical to ensuring maximum process availability and performance.

The 8 Series incorporates the latest cyber security features, including password complexity, RADIUS authentication and role-based access control (RBAC), enabling customers to comply with NERC CIP and NISTIR 7628 requirements.

Understanding that customers need protection and control devices that must reliably operate in harsh and challenging environments, GE delivers the Multilin 8 Series with harsh conformal coating on all printed circuit boards and a patented environmental awareness module that provides real-time detection of environmental factors that affect product life, as part of its standard offering, delivering higher reliability and extended relay life.

Uncompromised Reliability & Service

Designed, manufactured and tested to industry standards at our state-of-the-art facilities, the Multilin 8 Series delivers maximum performance for today's most demanding environments.

In addition to the superior technology and innovative design advancements that enable delivery of uncompromised performance and reliability, the Multilin 8 Series is also backed by GE's 10 year warranty plan.

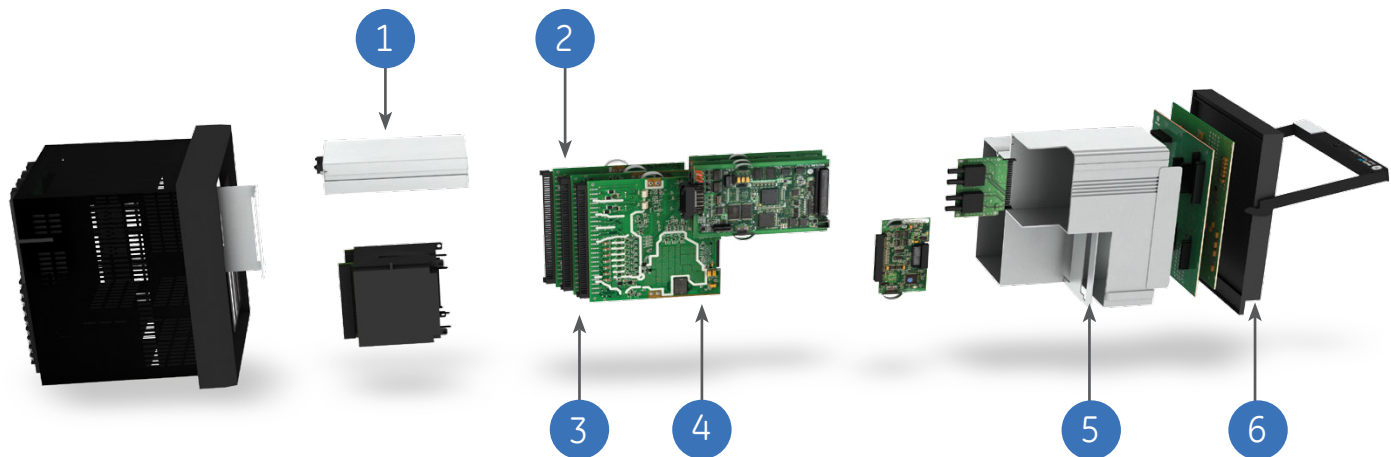
Multilin 845 Overview

Transformers are an essential component in the transmission and distribution of power. Process & consumers depend on the performance and reliability of power and distribution transformers to ensure uninterrupted power supply.

Transformers are constantly under thermal & electrodynamic stress. The goal of the protective relay is to minimize the trip time in event of a fault within the transformer.

The 845 relay offers the ideal solution for protecting, monitoring and controlling transformers during disturbances or faults. With a fast protection pass, running every 1/8th of a cycle, the 845 relay provides fast operating current, voltage, power and frequency protection elements. Supporting the latest in industry standard communication protocols, including IEC 62439/PRP and IEC 61850 Ed2, the Multilin 845 relay easily integrates into new or existing networks.

The 845 provides highly configurable protection and control logic, allowing for simplified coordination with upstream and downstream disconnect devices. The 845 also offers enhanced features, such as diagnostics, preventative maintenance, condition and security options. The 845's unique asset monitoring features enables a pro-active maintenance approach, providing operators with early detection and warning of potential issues before they become critical failures, thus mitigating the risks and costs associated with equipment repairs or replacement.



1 Field Swappable Power Supply

Extends the usable life of the protection relay and minimizes costly, time consuming replacement and re-configuration.

2 Harsh Environment Conformal Coating

Standard on all printed circuit boards delivering higher reliability and extended relay life

3 No Electrolytic Capacitors

Increasing quality and reliability for continuous plant operations

4 IPC A-610 Class 3 Manufacturing

Drives to the highest level of reliability standards delivering rugged performance

5 Robust Extruded Aluminum Chassis

Custom-designed extruded aluminum chassis delivering optimal thermal management to extend component life

6 Draw-Out

Providing simplified device fleet management

Protection & Control

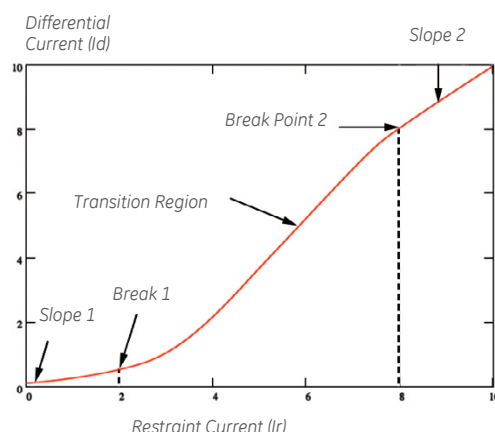
Percent Differential Protection

The 845 provides enhanced security by including both restrained and unrestrained (instantaneous) differential protection. The percent differential element is based on a configurable dual-breakpoint/dual-slope differential restraint characteristic with inrush and overexcitation inhibits based on 2nd & 5th harmonics. The restraint current is calculated as a maximum of the internally compensated currents for better through-fault stability under CT saturation conditions.

The percent characteristic allows the element to account for both DC and AC saturation of the current transformers.

The “cubic spline” curve characteristics enables the relay to perform accurately for restraint current in range between the two slope breakpoints.

Differential vs. Restraint Characteristic (Id vs.Ir)



The settings for the dual-slope, dual-breakpoint characteristic provides higher flexibility for shaping up the characteristic and achieving better sensitivity and security.

By accurately detecting tap position from the transformer LTC, the relay automatically performs magnitude compensation corresponding to the new voltage ratio and maintains no differential current.

Harmonic Inrush /Overexcitation Inhibit

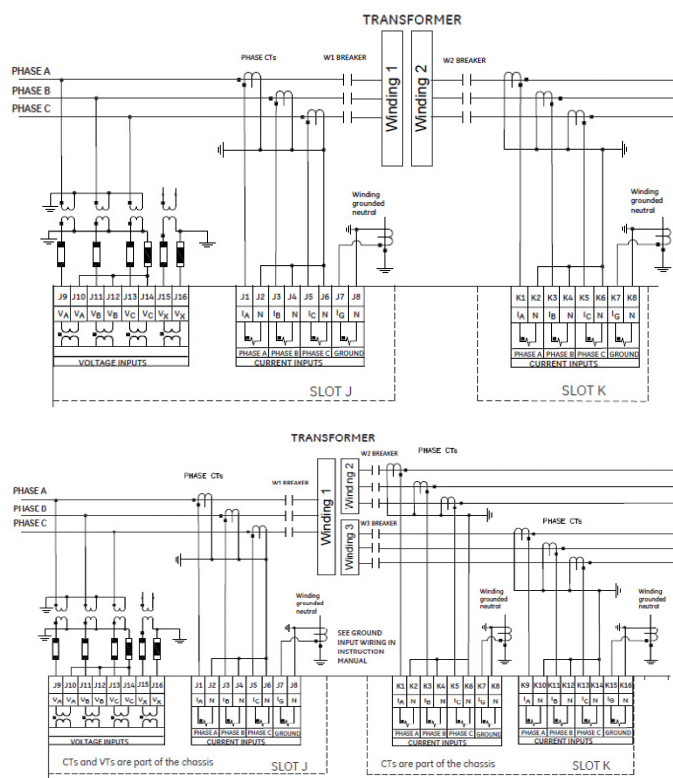
The 845 offers great performance in dealing with magnetizing current inrush during transformer energization, by providing four programmable restraint methods (Per Phase, Average, 2-out-of-3, 1-out-of-3), each of which can be enabled or disabled by the user.

An increase in transformer voltage or decrease in system frequency may result in overexcitation of the transformer. It is often desirable to prevent operation of the percent differential element in these cases therefore a fifth harmonic inhibit is integrated into the percent differential element to cater for overexcitation conditions resulting from an increased V/Hz ratio.

An independent fifth harmonic inhibit allows restraint for systems permitting intentional overexcitation (overfluxing) during energization.

Unrestrained Differential

An unrestrained differential element current magnitude is provided for fast tripping on heavy internal faults to limit catastrophic damage to the transformer and minimize risks to the remainder of the power system.



Restricted Ground Fault (RGF)

Conventional overcurrent protection fails to provide adequate protection for star connected windings whose neutral is impedance earthed. Faults close to the neutral do not generate adequate fault current. RGF (also known as zero sequence differential) provides sensitive ground fault detection for low-magnitude fault currents.

Overcurrent Elements

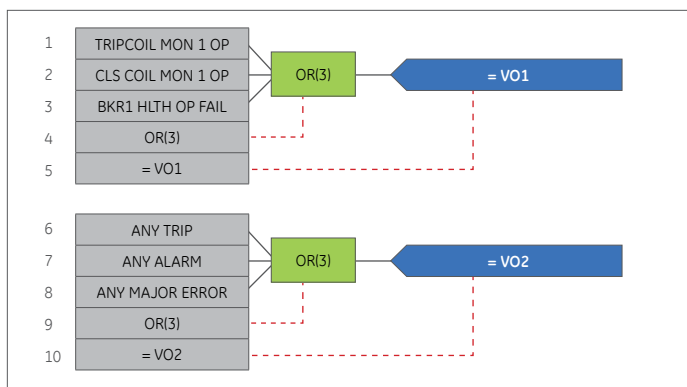
The 845 can be used to provide backup protection for transformer and adjacent power system equipment. Instantaneous overcurrent (IOC) elements can be used for fast clearing of severe internal and external (through) faults. Up to six, time overcurrent protection (TOC) elements per winding allows coordination with the adjacent protection zones and acts as backup protection.

- IOC protection functions are provided for phase, neutral & ground currents
- TOC protection functions are provided for phase, neutral and ground currents. A variety of standard time curves including IEEE, IEC, GE IAC, I2t, definite time are provided
- FlexCurves to coordinate with adjacent protections (including fuses) as well as transformer damage curves and thermal/damage curves for downstream equipment

Directional protection functions are provided for phase, neutral and ground currents. The voltage memory function enables a more reliable relay operation, especially for faults close to the VTs.

Negative Sequence Overcurrent

For Delta/Wye impedance grounded transformers, overcurrent protection is particularly difficult to set. A negative sequence based overcurrent element provides the required sensitivity during faults.



FlexLogic allows the Multilin 845 to operate and control breakers and other auxiliary devices needed to fit most transformer protection schemes and applications

Monitoring & Diagnostics

The Multilin 845 includes high accuracy metering and recording for all AC signals. Voltage, current, and power metering are built into the relay as a standard feature. Current and voltage parameters are available as total RMS magnitude, and as fundamental frequency magnitude and angle.

Integrated DGA Operation*

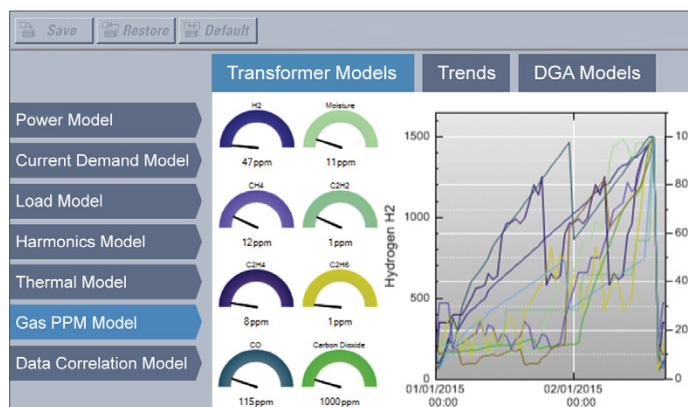
In addition to monitoring a transformer's electrical characteristics such as voltage, current, power, load, and demand through metering data, oscillography, thermal elements, and harmonics, the 845 also provides integrated Dissolved Gas Analysis (DGA) with the ability to collect, trend, and analyze a transformer's fault gasses. With integrated connectivity to GE's Kelman composite and multi-gas DGA devices, the 845 is able to detect and alert operators to electrical or chemical conditions that could result in a fault or asset failure.

GE's transformer M&D devices offer single and multi-gas (DGA) measurements in oil filled transformers for detecting insulation degradation, incipient faults and monitoring various mechanical characteristics. Integrated operation of a transformer protection relay with M&D DGA device(s) using Modbus TCP/IP protocol helps in creating an advanced technology platform for transformer monitoring with data & information correlation between protection and DGA data. This integrated platform captures multi-fold data from both the relay and M&D device, summarizes and analyzes the data, then presents it as useful information in the form of operational records, reports and visualization screens which can be viewed and used by both electrical and maintenance engineers.

GE M&D devices supported for integrated operation – The 845 supports a wide range of both composite gas and multi-gas DGA devices, including the Hydran M2 single composite gas DGA device, Minitrans 3-gas plus moisture DGA device, DGA 500 5-gas plus moisture DGA device and the Transfix 9-gas plus moisture DGA device.

DGA data and history – With samples taken in regular intervals, operators are able to view individual gas and moisture levels to understand both historical and current gas ppm values, alarms associated with gas ppm values and short term history trend of 50-100 latest values.

DGA models – Industry standard DGA models such as Duval, Key Gas, and Gas Ratios are utilized by the 845 to provide analysis of the measured gas data. Presented graphically, the 845 converts static data to actionable information providing operators with a clear view of changes to the chemical characteristics and composition within the transformer.



Transformer Learned Data Record Visualization

Learned Data Record – The 845 captures key electrical and DGA data values during transformer energization to trend and analyze transformer performance. Data is summarized and presented to operators through a pre-formatted Health Report to clear indication of changes to measured parameters. Up to 365 records are supported within the 845 relay. Up to 365 latest records are supported in the 845 relay. The data, when input cumulatively to the transformer model screens helps in visualizing trends and correlating key transformer electrical and DGA parameters.

Historical maximum record – Historical maximum data record updates new maximum values of key electrical and DGA parameters along with the time stamp, over the operating life time of transformer indicating peak stress experienced by transformer at any instant of time over its past operating life.

Transformer integrated digital fault record – Integrated transformer digital fault record captures data required to analyze the stress created by each major fault occurrence on the transformer and identify any possible failure modes in order to take the necessary preventive & maintenance actions. It also enables operators to analyze and identify the risk of failure in further operation of the transformer. Protection & DGA related data is triggered, stored and displayed within GE's EnerVista 8 Series Setup Software as an integrated transformer fault record. up to 5 latest records are available for display simplifying post-fault analysis.

Transformer health report – provides a pre-formatted, easy to read, Health Report, in PDF format, which captures key operational data of the transformer combining both electrical and DGA characteristics. Health reports provide clear indication of transformer condition at any instant of time and helps utilities in analyzing risk associated with transformer and condition based maintenance planning.

Transformer energization record – Energization record captures the transient record (oscillography) for initial 10 cycles and computes various electrical data representing stress experienced by transformer during the energization event. Energization record will be computed specific to select or configured winding source in general setup by user and up to 6 latest records will be available for display.

Advanced Asset Monitoring

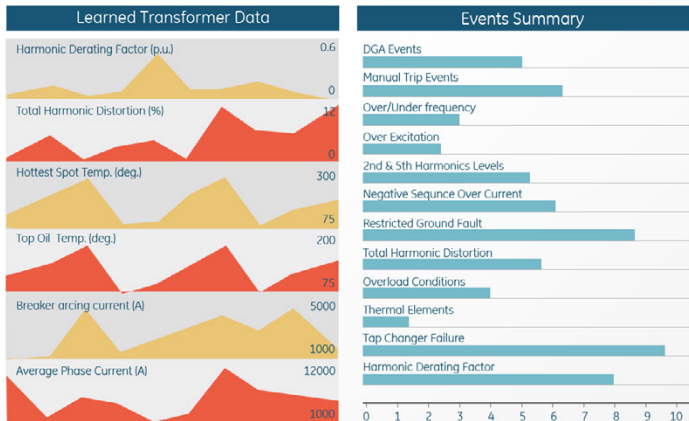
*Option available 3Q 2015

Integrated Electrical and DGA for Comprehensive Transformer Monitoring & Diagnostics

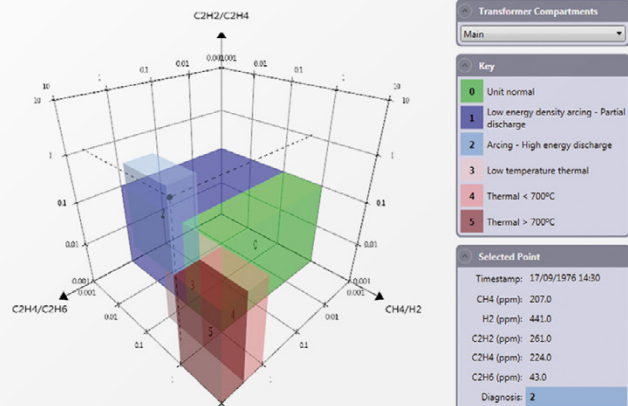
The Multilin 845 offers advanced transformer health monitoring and diagnostics through advanced notification of potential issues before they become critical. The Multilin 845 features detailed learned data, summarized pre/post-fault records, and integration with GE's DGA devices to collect, trend, and analyze a transformer's fault gasses. This enables operators to minimize costly unplanned outages and equipment failures.

Multilin 845 Transformer Health Report

Electrical Protection Data



Chemical Monitoring DGA



M&D Data



Consolidated Transformer Data

Kelman Transfix Monitoring & Diagnostics

- Hourly sampling of key fault gasses
- Photo Acoustic Technology for DGA
- Up to 9 fault gasses and oxygen
- Measured oil moisture data (ppm)

Multilin 845 Transformer Protection

- High accuracy metering
- Detailed pre/post-fault reports
- Transformer energization data
- Breaker Health Monitoring

The 845 has advanced functions that raise an alarm or trip the scheme when an internal condition in the power transformer or breaker could lead to a fault. These functions are conditions of:

Hottest-spot temperature: element provides a mechanism for detecting abnormal winding hottest-spot temperatures inside the transformer.

Aging factor: the aging factor element detects transformer aging in per-unit normal insulation aging

Loss of Life: This feature provides an estimate of how much of the transformer's total insulation life has elapsed.

Harmonic Derating: This derating factor is used to evaluate the load capability of the installed transformer under the non-sinusoidal load currents.

Tap Changer Failure: This element picks up when the actual tap changer position exceeds the maximum number of taps or the actual tap changer position lowers below the minimum number of taps.

Breaker arcing current: This element calculates an estimate of the per-phase deterioration on the breaker contacts by measuring and integrating the current (squared) passing through the breaker contacts as an arc.

Breaker Health Monitoring

The breaker is monitored by the relay not only for detection of breaker failure, but also for the overall "breaker health" which includes:

- Breaker close and breaker open times
- Trip circuit monitoring
- Spring charging time
- Per-phase arcing current
- Trip counters

All algorithms provide the user with the flexibility to set up initial breaker trip counter conditions and define the criteria for breaker wear throughout a number of setpoints.

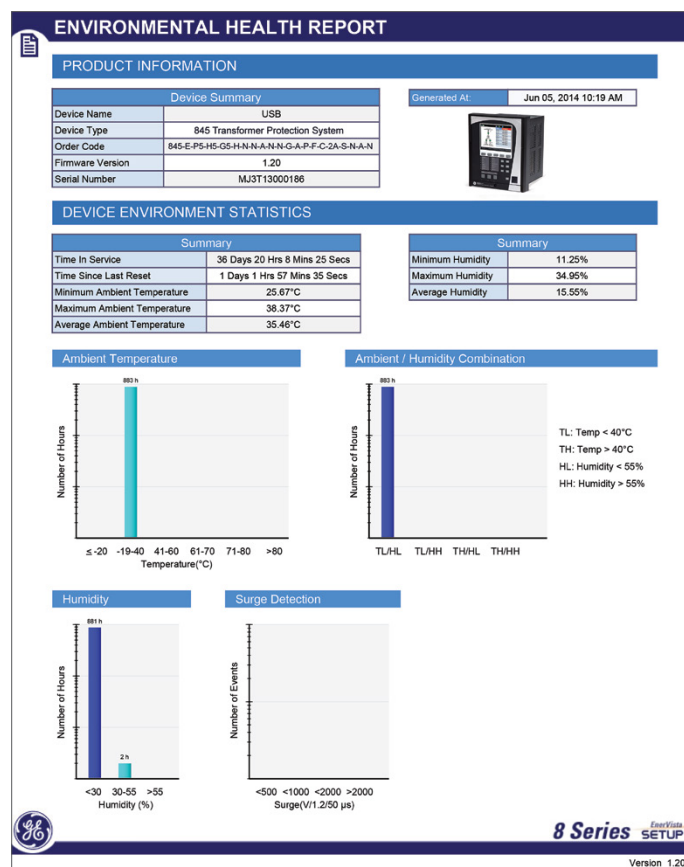
Environmental Monitoring

Breaker Health // New Site 1: USB: Records: Brea...	
Save	Restore
Default	
SETTING	PARAMETER
Total Breaker Trips	12
Trips Since Last Reset	9
Alarm Counter	4
Last Trip Time	2512 ms
Avg. of 5 Trip Time	1842 ms
Avg. of Trip Time	1856 ms
Last Close Time	725 ms
Avg. of 5 Close Time	948 ms
Avg. of Close Time	1217 ms
Last PH A Arc Time	0 ms
Avg. of 5 PH A Arc Time	0 ms

Multilin 8 Series Breaker Health Report available on the display or via the setup software

The 845 includes an environmental monitoring system that measures and provides operating condition information for the relay. Reliable and secure operation of the 845 relay and other electronic devices in the vicinity may be affected by environmental factors. The 845 relay has been designed to meet or exceed required industry standards. Some operating conditions may be beyond those standards and reduce total lifespan of the device.

Typical environmental conditions that may affect electronic device reliability include voltage, current, temperature, humidity, dust, contaminants, mechanical stress, shock, radiation and intensity of electrical and magnetic fields. These environmental factors are different from natural weather conditions at particular installation conditions and are beneficial to monitor. The 845 relay's built-in environmental awareness feature (patent "Systems and methods for predicting maintenance of intelligent electronic devices") collects the histograms of operating conditions from the point the device is put into service. Monitored environmental conditions include temperature, humidity and transient voltage. The histogram of each environmental factor may be retrieved from the diagnostic page accessed through a PC running the EnerVista Multilin 8 Series Setup program.

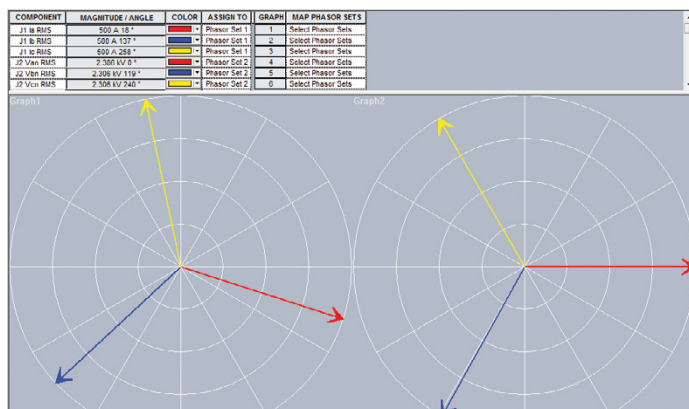


Environmental health report is available via Multilin PC Software

Metering

The Multilin 845 offers high accuracy power quality monitoring for fault and system disturbance analysis. The Multilin 8 Series delivers unmatched power system analytics through the following advanced features and monitoring and recording tools:

- Up to 9-gases (H_2 , CO_2 , CO , C_2H_4 , C_2H_6 , CH_4 , C_2H_2 , H_2O , O_2 , and N_2), TDCG and moisture are supported for integrated operation of 845 relay with Transfix M&D device.
- Up to 5-gases (H_2 , CO , C_2H_2 , C_2H_4 , and CH_4) and moisture are supported for integrated operation of 845 relay with DGA500 M&D device.
- Up to 3-gases (H_2 , CO , C_2H_2) and moisture are supported for integrated operation of 845 relay with Minitrans M&D device.
- Hydran H_2 ppm, Hydran H_2 ppm daily & hourly trend and moisture are supported for integrated operation of 845 relay with Hydran M2 device.
- Harmonics measurement up to 25th harmonic for both currents and voltages including THD.
- The length of the transient recorder record ranges from 31 cycles to 1549 cycles, depending on the user specified configuration. This gives the user the ability to capture long disturbance records which is critical for some applications.

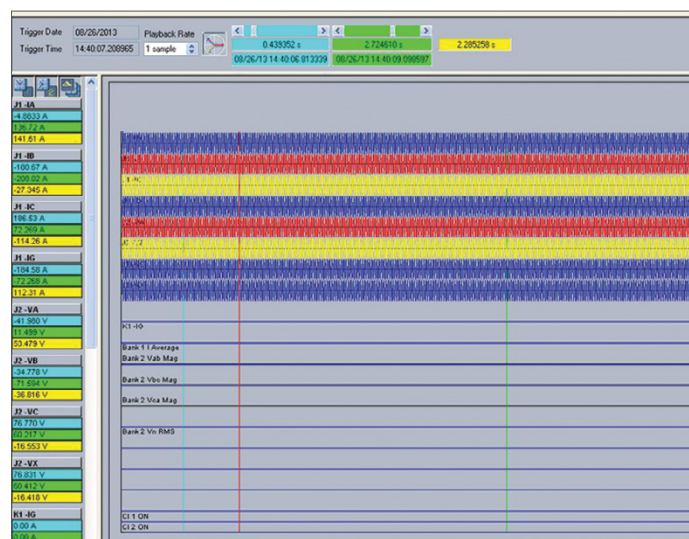


Multilin 845 Phasor viewer

- 32 digital points and 16 analog values, assigned by the user, can be captured in the COMTRADE format by the transient recorder.
- Comprehensive data logger provides the recording of 16 analog values selected from any analog values calculated by the relay. Capture rates range from 16 ms, 20ms, 1 second, 30 seconds, 1 minute, 30 minutes, or 1 hour rate. This data capture flexibility allows the operator to measure power factor or reactive power flow (for example), for several hours or even days, enabling detailed analysis and corrective action to be taken, if required.
- Detailed Fault Report allows the user to identify the fault location, fault type and element(s) that triggered the 845 to trip. It carries other useful information, such as pre-fault and fault phasors, relay name and model, firmware revision and other details. The 845 stores fault reports for the last 16 events.
- 1024 Event Recorder chronologically lists all triggered elements with an accurate time stamp over a long period of time. The 845 stores the last 1024 events locally in the relay.

Event Parameter	Value
Winding 2 Phase A current Magnitude	179.8 Amp
Winding 2 Phase A current Angle	139 °Lag
Winding 2 Phase B current Magnitude	0.0 Amp
Winding 2 Phase B current Angle	0 °Lag
Winding 2 Phase C current Magnitude	0.0 Amp
Winding 2 Phase C current Angle	0 °Lag
Winding 2 Ground current Magnitude	0.0 Amp
Winding 2 Ground current Angle	0 °Lag
Winding 2 Phase A 2nd Harmonic	0.0 %fo
Winding 2 Phase B 2nd Harmonic	0.0 %fo
Winding 2 Phase C 2nd Harmonic	0.0 %fo
Winding 2 Phase A 5th Harmonic	0.0 %fo
Winding 2 Phase B 5th Harmonic	0.0 %fo
Winding 2 Phase C 5th Harmonic	0.0 %fo
Winding 3 Phase A current Magnitude	0 Amp

Multilin 845 Event Recorder



The 845 monitoring system performance with oscillography and event records

Event Number	Date/Time	Cause
46523	Aug 26 2013 14:33:15.056260	Phase IOC 1 OP C
46522	Aug 26 2013 14:33:12.415722	Phase IOC 1 PWP C
46521	Aug 26 2013 14:33:12.415722	Phase IOC 1 OP B
46520	Aug 26 2013 14:33:12.415722	Phase IOC 1 PWP B
46519	Aug 26 2013 14:33:12.415722	Phase IOC 1 OP A
46518	Aug 26 2013 14:33:12.415640	Trip ON
46517	Aug 26 2013 14:33:12.415557	Phase IOC 1 OP A
46516	Aug 26 2013 14:33:12.415557	Phase IOC 1 OP
46515	Aug 26 2013 14:33:12.415557	Phase IOC 1 PWP A
46514	Aug 26 2013 14:33:12.415557	Phase IOC 1 PWP
46513	Aug 26 2013 14:33:07.597636	Trip OFF
46512	Aug 26 2013 14:33:05.920963	Trip ON
46511	Aug 26 2013 14:33:05.920963	Phase IOC 1 OP C
46510	Aug 26 2013 14:33:05.920963	Phase IOC 1 PWP C
46509	Aug 26 2013 14:33:05.920963	Phase IOC 1 OP B
46508	Aug 26 2013 14:33:05.920963	Phase IOC 1 PWP B
46507	Aug 26 2013 14:33:05.920963	Phase IOC 1 OP A
46506	Aug 26 2013 14:33:05.920963	Phase IOC 1 OP
46505	Aug 26 2013 14:33:05.920963	Phase IOC 1 PWP A
46504	Aug 26 2013 14:33:05.920963	Phase IOC 1 PWP
46503	Aug 26 2013 14:32:47.891765	Critical Fail ON
46502	Aug 26 2013 14:32:47.891765	Local Mode OFF
46501	Aug 26 2013 14:32:47.891765	In-Service
46499	Aug 26 2013 14:27:55.714162	Group 1 Active
46498	Aug 26 2013 14:27:55.714162	Out-Of-Service
46497	Aug 26 2013 14:27:55.714162	Factory Reset
46496	Aug 26 2013 14:27:55.714162	Chl. Pwr. Lost
46495	Aug 26 2013 14:27:55.714162	Chl. Pwr. Lost
46494	Aug 26 2013 14:27:55.714162	Chl. Pwr. Lost
46493	Aug 26 2013 14:26:54.319905	Login
46492	Aug 26 2013 11:57:07.576427	Group 1 Active
46491	Aug 26 2013 11:57:07.576427	Out-Of-Service
46490	Aug 26 2013 11:57:07.576427	Factory Reset
46489	Aug 26 2013 11:55:44.130097	Chl. Pwr. Lost
46488	Aug 26 2013 11:53:48.549501	Login
46487	Aug 26 2013 11:53:48.549501	Chl. Pwr. Lost
46486	Aug 26 2013 11:53:48.549501	Chl. Pwr. Lost
46485	Aug 26 2013 11:53:48.549501	Chl. Pwr. Lost
46484	Aug 26 2013 11:53:48.549501	Chl. Pwr. Lost

Communications

The 845 provides advanced communications technologies for remote data and engineering access, making it easy and flexible to use and integrate into new and existing infrastructures. Direct support for fiber optic Ethernet provides high-bandwidth communications, allowing for low-latency controls and high-speed file transfers of relay fault and event record information. The 845 also supports two independent IP addresses, providing high flexibility for the most challenging of communication networks.

Providing several Ethernet and serial port options and supporting a wide range of industry standard protocols, the 845 enables easy, direct integration into DCS and SCADA systems. The 845 supports the following protocols:

- IEC 61850 Ed2, IEC 62439 / PRP
- DNP 3.0 serial, DNP 3.0 TCP/IP, IEC 60870-5-103, IEC 60870-5-104
- Modbus RTU, Modbus TCP/IP

The 845 has USB front port and Wi-Fi interfaces for ease of access to the relay.

Wi-Fi Connectivity:

- Simplify set-up and configuration
- Eliminate personnel in front of switchgear
- Simplify diagnostic retrieval
- WPA-2 security



Role Based Access Control (RBAC)

Efficiently administrate users and roles within UR devices. The new and advanced access functions allow users to configure up to five roles for up to eight configurable users with independent passwords. The standard "Remote Authentication Dial In User Service" (Radius) is used for authentication.

Event Recorder (Syslog for SEM)

Capture all cyber security related events within a SOE element (login, logout, invalid password attempts, remote/local access, user in session, settings change, FW update, etc), and then serve and classify data by security level using standard Syslog data format. This will enable integration with established SEM (Security Event Management) systems.

RBAC (Role Based Access Control), which provides efficient administration of users and roles within devices, efficiently administrates users and roles. In addition, Event Recorder (Syslog for SEM) captures all cyber security related events within a SOE element (login, logout, invalid password attempts, remote/local access, user in session, settings change, FW update, etc.), and then serves and classifies data by security level using standard Syslog data format. This will enable integration with established SEM (Security Event Management) systems.



Cyber Security with Radius Authentication

Cyber Security

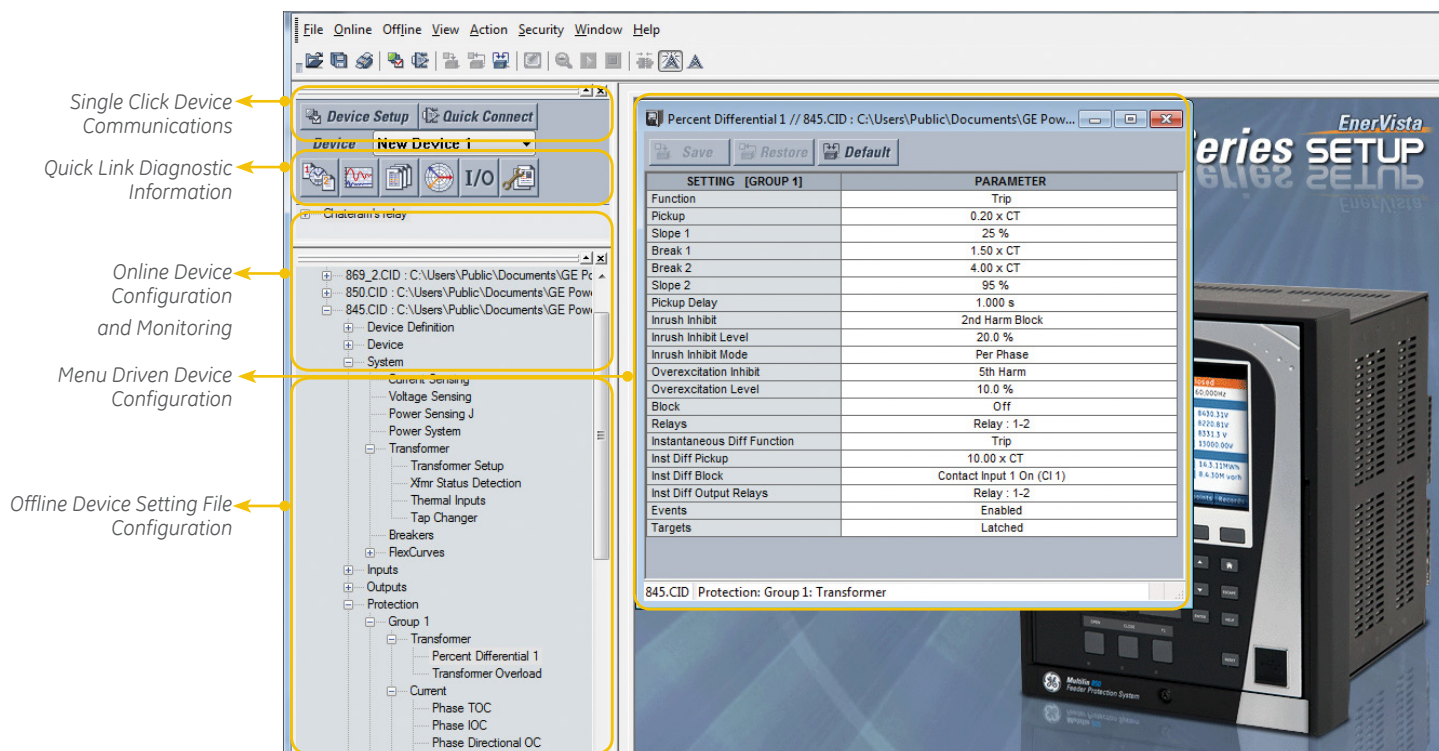
The 845 cyber security enables the device to deliver full cyber security features that help operators to comply with NERC CIP guidelines and regulations.

AAA Server Support (Radius/LDAP)

Enables integration with centrally managed authentication and accounting of all user activities and uses modern industry best practices and standards that meet and exceed NERC CIP requirements for authentication and password management.

Software & Configuration

The EnerVista™ suite is an industry-leading set of software programs that simplifies every aspect of using the Multilin 845. EnerVista provides all the tools to monitor the status of the protected asset, maintain the device and integrate the information measured by the Multilin 8 Series into SCADA or DCS process control systems. The ability to easily view sequence of events is an integral part of the setup software, as postmortem event analysis is critical to proper system management.



EnerVista Launchpad

EnerVista Launchpad is a powerful software package that provides users with all of the setup and support tools needed for configuring and maintaining Multilin products.

The setup tools within Launchpad allow for the configuration of devices in real-time, by communicating via serial, Ethernet or modem connections, or offline by creating device setting files to be sent to devices at a later time. Included in Launchpad is a document archiving and management system that ensures critical documentation is up-to-date and available when needed.

8 Series Setup Software

8 Series Setup Software is a single setup and configuration tool across the platform and can reduce device setup and configuration time.

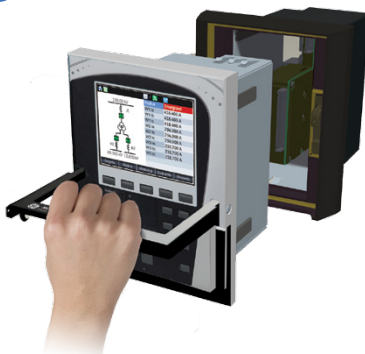
Simplified Setup & On-Going Maintenance

The robust 845 streamlines user workflow processes and simplifies engineering tasks, such as configuration, wiring, testing, commissioning, and maintenance. Building on the history of simplified setup and configuration, the 845 relay has implemented simplified setup screens to assist in minimizing relay setup time. In addition, for local programming, the 845 comes with a fully functional Graphical Control Panel (GCP), which allows users to locally monitor the asset.

Ease-of-Use

Continuing its legacy in providing easy-to-use protective relay solutions, the 845 is designed to minimize product and system configurability requirements for quicker physical installation and for easier and simplified setup and configuration.

1 Easy to Use - Draw-out case



2 Easy to Configure - 1 simple step



3 Detailed Diagnostics



Full Color Graphical HMI Front Display

A large, full color Graphic Control Panel (GCP) ensures clear representation of critical status and measurements. When the keypad and display are not being used, the GCP will automatically revert to screen saver mode, which will turn off the display until one of the local pushbuttons is pushed.

The GCP can be used to view device and system status, alarms and event logs, and metering information. The GCP and navigation keys simplify relay configuration and setup, allowing users to make setting changes directly through the front panel.

LED Indicators for Quick Status Indication

The front panel includes user configurable LED's. Each LED can be completely configured and named based on the application and user requirements. The color of each indicator conveys its importance.

G = Green: General Condition

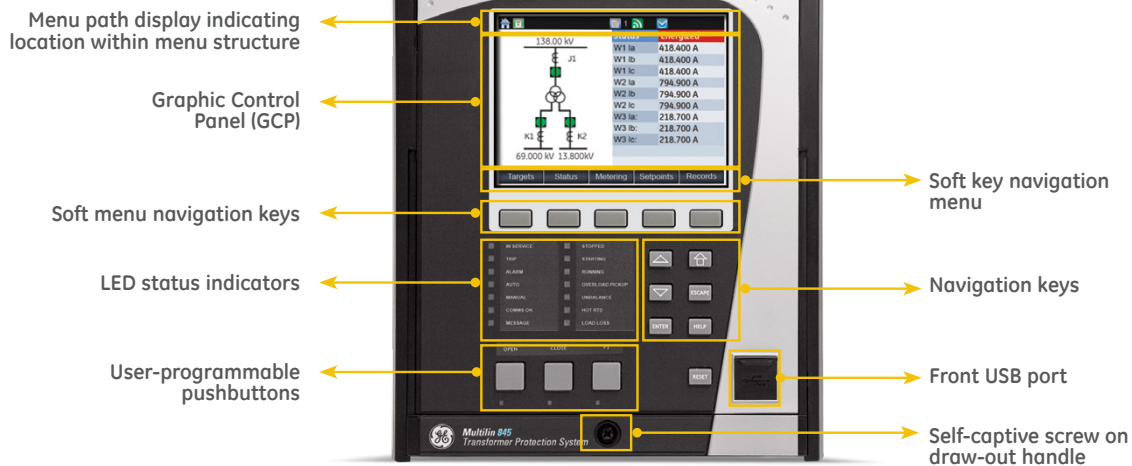
A = Amber: Alert Condition

R = Red: Serious Alarm or Important Status

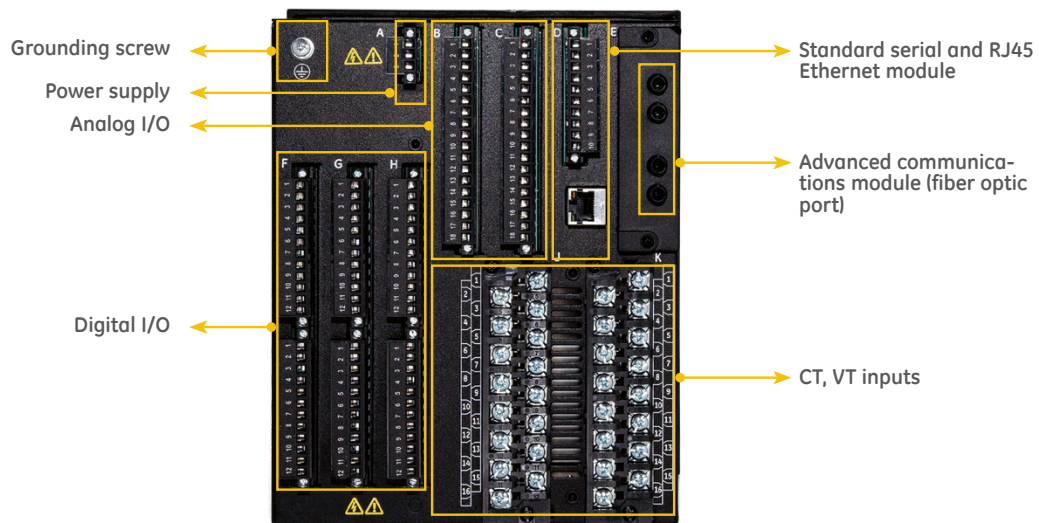
The 845 front panel provides 14 LED indicators and 3 LED pushbutton indicators. 10 LED's are user-programmable, while "In service" and "Pickup" LED's are non-programmable. "Trip" and "Alarm" LED's are not color programmable but can be assigned with selected operands.

User-programmable LED's can be turned on by a selection of FlexLogic operands representing protection, control or monitoring elements. Each LED can be configured to be self-reset or latched and labeled based on the application and user requirements. User-programmable LED's can be selected to be either Red, Green or Amber to give the distinctive indication of selected operations.

Front View



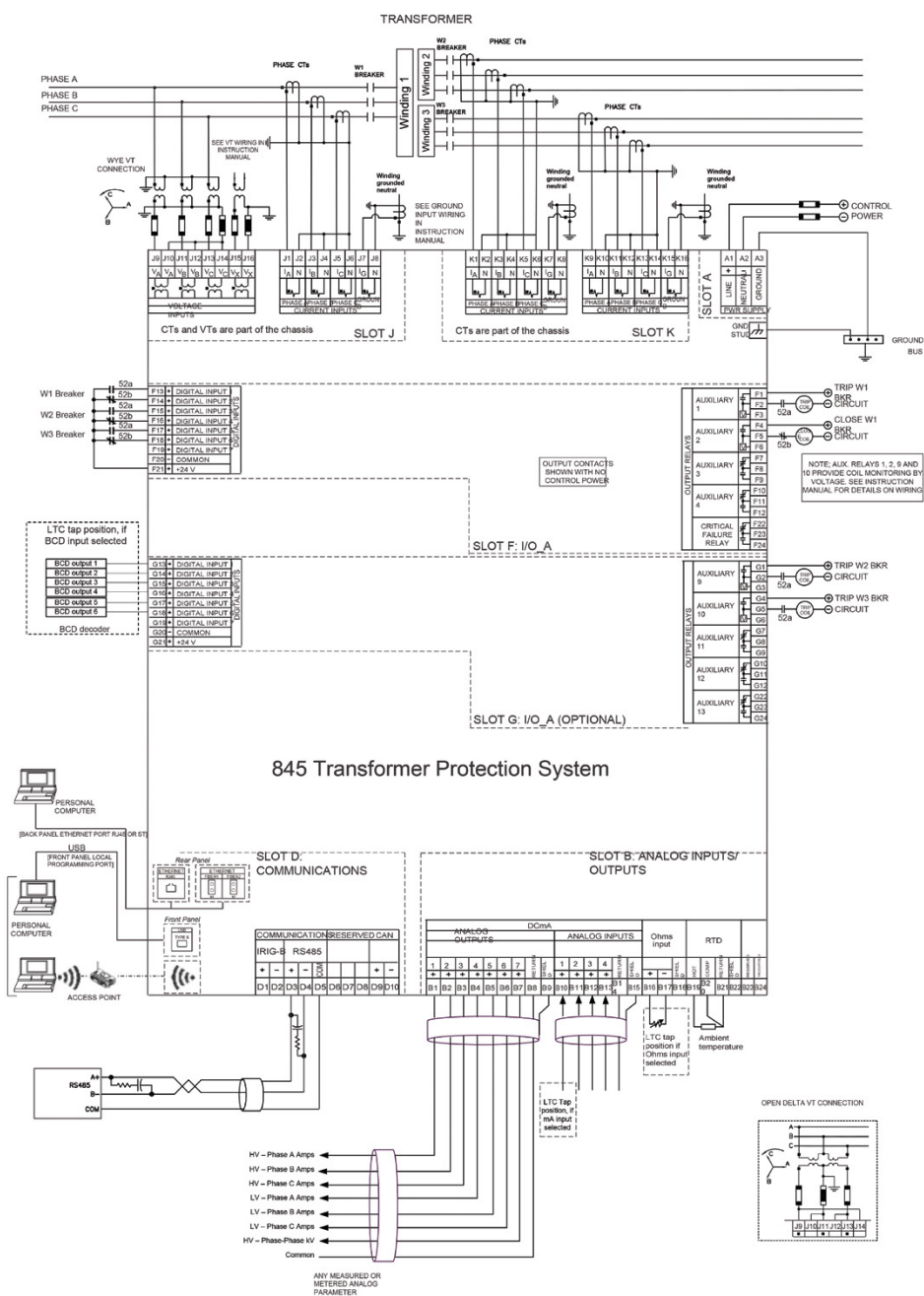
Rear View



Dimensions & Mounting



Typical Wiring



Testing and Certification

TEST	REFERENCE STANDARD	TEST LEVEL
Dielectric voltage withstand	EN60255-5/IEC 60255-27	2.3 kV
Impulse voltage withstand	EN60255-5/IEC 60255-27	5kV
Damped Oscillatory	IEC61000-4-18/IEC60255-22-1	2.5 kV CM, 1 kV DM
Electrostatic Discharge	EN61000-4-2/IEC60255-22-2	Level 4
RF Immunity	EN61000-4-3/IEC60255-22-3	Level 3
Fast Transient Disturbance	EN61000-4-4/IEC60255-22-4	Class A and B
Surge Immunity	EN61000-4-5/IEC60255-22-5	Level 3 & 4
Conducted RF Immunity	EN61000-4-6/IEC60255-22-6	Level 3
Power Frequency Immunity	EN61000-4-7/IEC60255-22-7	Class A & B
Voltage interruption and Ripple DC	IEC60255-11	PQT levels based on IEC61000-4-29, IEC61000-4-11 and IEC61000-4-17
Radiated & Conducted Emissions	CISPR11 /CISPR22/ IEC60255-25	Class A
Sinusoidal Vibration	IEC60255-21-1	Class 1
Shock & Bump	IEC60255-21-2	Class 1
Seismic	IEC60255-21-3	Class 2
Power magnetic Immunity	IEC61000-4-8	Class 5
Pulse Magnetic Immunity	IEC61000-4-9	Class 4
Damped Magnetic Immunity	IEC61000-4-10	Class 4
Voltage Dip & interruption	IEC61000-4-11	0, 40, 70, 80% dips, 250/300 cycle interrupts
Conducted RF Immunity 0-150khz	IEC61000-4-16	Level 4
Ingress Protection	IEC60529	IP54 front
Environmental (Cold)	IEC60068-2-1	-40C 16 hrs
Environmental (Dry heat)	IEC60068-2-2	85C 16hrs
Relative Humidity Cyclic	IEC60068-2-30	6day variant 2
EFT	IEEE/ANSI C37.90.1	4kV, 2.5 kHz
Damped Oscillatory	IEEE/ANSI C37.90.1	2.5kV, 1 MHz
RF Immunity	IEEE/ANSIC37.90.2	20V/m, 80 MHz to 1GHz
ESD	IEEE/ANSIC37.90.3	8kV CD/ 15 kV AD
Safety	UL508	e57838 NKCR
	UL C22.2-14	e57838 NKCR7

APPROVALS		
	APPLICABLE COUNCIL DIRECTIVE	ACCORDING TO
CE compliance	Low voltage directive	EN60255-5 / EN60255-27
	EMC Directive	EN60255-26 / EN50263 EN61000-6-2 / EN61000-6-4
North America	cULus	UL508 UL1053 C22.2.No 14
ISO	Manufactured under a registered quality program	ISO9001

ENVIRONMENTAL	
Ambient temperatures:	
Storage/Shipping:	-40°C to 85°C
Operating:	-40°C to 60°C (continuous)
Humidity:	Operating up to 95% (non condensing) @ 55°C (As per IEC60068-2-30 Variant 2, 6days)
Altitude:	2000m (max)
Pollution Degree:	II
Overvoltage Category:	III
Ingress Protection:	IP54 Front

Ordering

845	-E	**	**	**	*	*	*	*	*	N	*	*	*	*	*	*	*	*	N	Transformer Protection Relay (Standard : English Language; High Voltage PS, Graphical Control Panel)
Base Unit	845	E																	English	
Language		NN																	Two windings, no voltage	
PHASE CURRENTS - SLOT J Bank 1/2:		P1																	1A three-phase currents (J1) with voltage (J2)	
		P5																	5A three-phase currents (J1) with voltage (J2)	
PHASE CURRENTS - SLOT K Bank 1/2:			M1																1A three-phase inputs (K1), 1A three-phase inputs (K2) two windings without voltage	
			M5																5A three-phase inputs (K1), 5A three-phase inputs (K2) two windings without voltage	
			MX																5A three-phase inputs (K1), 1A three-phase inputs (K2) two windings without voltage	
			H1																1A three-phase inputs (K1) - two windings with voltage	
			H5																5A three-phase inputs (K1) - two windings with voltage	
			R1																1A three-phase inputs (K1), 1A three-phase inputs (K2) - three windings with voltage	
			R5																5A three-phase inputs (K1), 5A three-phase inputs (K2) - three windings with voltage	
Ground Currents			G1																1A ground inputs	
			G5																5A ground inputs	
			Q1																5A, 1A (NN + MX) or (P5 + H1) - in line with phase current	
			Q2																5A (J1) + 1A (K1) + 1A (K2)	
			Q3																1A (J1) + 5A (K1) + 5A (K2)	
Power Supply				H															110 - 250 V dc/110 - 230 Vac	
Slot B - LV I/O					N														None	
					R														6 X RTDs	
Slot C - LV I/O						N													None	
						R													6 X RTDs	
Slot F - HV I/O							A												2 Form A (Vmon), 3 Form C, 7 Digital Inputs (Low / High voltage, Int/Ext supply)	
Slot G - HV I/O								N											None	
								A											2 Form A (Vmon), 3 Form C, 7 Digital Inputs (Low / High voltage, Int/Ext supply)	
Slot H - HV I/O									N										None	
Faceplate										G									Color Graphical Display	
Current Protection											S								Basic = 87T, 50/87, 50P(3), 50N(2), 50G(3), 51P(3), 51N(2), 51G(3)	
											M								Standard = Basic + 50_2(2), 51_2(2), RGF(2)	
											A								Advanced = Standard + 67P, 67G, 67N, (requires voltage selection)	
Voltage Metering & Protection:												N							None	
												S							Basic = 27P, 27X, 59P, 59N, 59X, 81O/U	
												P							Standard = Basic + 24(2), 32, 55, 81R	
Control													B						Basic = Setpoint Group Control, Virtual Inputs, Trip Bus	
													F						Standard = Basic + Flexlogic, VTFF + 50BF + VTFF	
Monitoring														B					Standard = Breakers Trip Coil, Harmonics, THD, Demand, Trip Counters, Transformer Overload, Harmonic Derating Factor	
															C				Advanced = Standard + Breaker Arcing, Breaker Health, Winding Hottest Spot, Aging Factor, Loss of Life, Tap Changer	
															M				M&D = Standard + Breaker Arcing, Breaker Health, Winding Hottest Spot, Aging Factor, Loss of Life, Tap Changer+ M&D	
Communications														S	E				Standard = Front USB, 1 x Rear RS485 : Modbus RTU, DNP3.0, IEC60870-5-103 + 1 x Ethernet (Modbus TCP, DNP)	
														1	E				Advanced = Front USB, 1 x Rear RS485 + 2 x Ethernet Fiber, MODBUS RTU / TCP, DNP3.0, IEC 60870-5-103/104, 1588, SNTP, OPC UA	
														1	P				Advanced + PRP	
														2	A				Advanced + IEC 61850	
														2	E				Advanced + PRP + IEC 61850	
Fiber Optic Connector															N				None	
															S				ST, Multi-mode 850nm	
Wireless Communication																N			None	
																W			WiFi 802.11	
Security																	B		Basic	
																	A		Advanced - CyberSentry Level 1	
Future Option																	N		Not available	

GEDigitalEnergy.com

IEC is a registered trademark of Commission Electrotechnique Internationale. IEEE is a registered trademark of the Institute of Electrical Electronics Engineers, Inc. Modbus is a registered trademark of Schneider Automation. NERC is a registered trademark of North American Electric Reliability Council. NIST is a registered trademark of the National Institute of Standards and Technology.

GE, the GE monogram, Multilin, FlexLogic, EnerVista and CyberSentry are trademarks of General Electric Company.

GE reserves the right to make changes to specifications of products described at any time without notice and without obligation to notify any person of such changes.

Copyright 2015, General Electric Company. All Rights Reserved.

GEA-12875A(E)
English
150618



imagination at work